



-scaff

Corporate Profile 2007

www.formscaff.com



Form-Scaff is a leading supplier of formwork and scaffolding to the construction and civil engineering industries. A born and bred South African company, Form-Scaff not only manufacture, hire and sell world-class products, but also provide the design skills, technical advice and support that comes with having over forty years local experience and twenty three branches nationwide.

Form-Scaff is owned by Waco International and black empowerment company, Kagiso. Waco International employs over 4000 people world-wide and has operations in Africa, the UK, Australia, New Zealand and Chile.

We deliver uncompromising formwork and scaffolding solutions to the civil and commercial construction industry. We achieve this through the passion of our people, quality of our innovative products and superior service delivery.

Mission Statement

Whilst this brochure provides you with an overview of the complete range of Form-Scaff products, informative and detailed brochures for each of the product ranges can be obtained by contacting your Form-Scaff Technical Representative or Form-Scaff's head office on (011) 842-4000, or visit www.formscuff.com

Disclaimer:

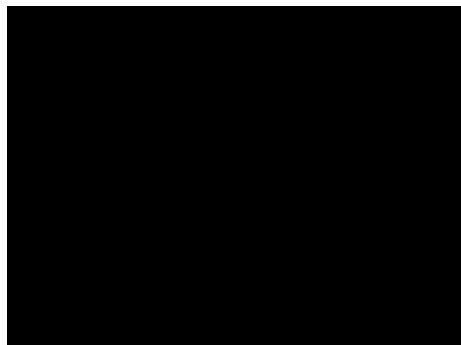
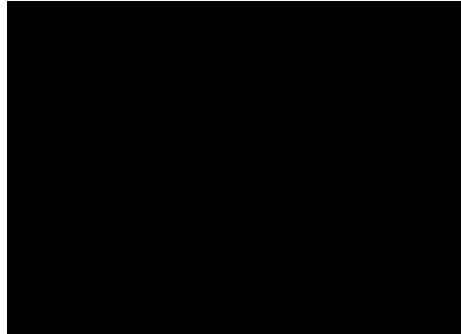
Copyright in this catalogue vests in Form-Scaff, a division of Waco Africa (Proprietary) Limited ("Form-Scaff") and extends inter alia, to the making of copies in whole or in part without the prior written consent of Form-Scaff.

While every effort has been made to ensure the accuracy of the information in this catalogue, we cannot accept responsibility for any errors which may occur as a result of reliance on the contents of this catalogue and are not liable for any loss of any nature that may be incurred as a result of such reliance. Details of any of the products may change without prior notice.

The customer must ensure that 'good practice' is adopted on site by competent persons and that the products shown in this catalogue are erected, used and stripped in accordance with the relevant Codes of Practice and the OHS Act and Regulations 85 of 1993. This catalogue does not contain any design detail but lists and depicts the items available under this product range. The responsibility for design is the responsibility of the customer.

Contents

page 2	Form-Scaff Profile Combining international expertise with local experience
page 5	Making a Difference Form-Scaff's commitment to South Africa is the foundation of the partnership with Kagiso
page 6	Company Structure The divisions and branches of Form-Scaff
page 12	Hire or Buy Evaluating your options
page 14	Tifa and Tifa-Lite New generation wall formwork systems
page 16	Multi-Form Walls and Slabs Optimising on-site flexibility
page 18	Alu-Dalle and Tim-Deck New generation decking systems
page 20	Kwik-Stage Four components - numerous applications
page 21	Coffers & Troughs Economic large span floors
page 22	Econo-Form Multi-purpose formwork solutions
page 23	Kwik-Lock Instant access to elevated positions
page 24	Sundries Quality supporting items
page 25	Contact Details Head Office and Branches



Form-Scaff Profile



For over 40 years Form-Scaff South Africa has been designing, manufacturing, hiring and selling world-class industry construction equipment. The Company operates from various locations nationwide and has international branches in Mauritius and Namibia. Demand for Form-Scaff's products has also led to a burgeoning international export market including lucrative markets in Africa, the Middle East and Australasia.

International innovation meets local expertise

The Company is a major manufacturer of formwork and scaffolding. The quality of its products has ensured that the company has maintained its position among other global suppliers.

Form-Scaff's vision centres on delivering uncompromising formwork and scaffolding solutions through our people, products and service. At every level within Form-Scaff you will encounter experienced, skilled and passionate people. The specialised Product Development teams and Technical Support teams provide a wealth of experience.

At Form-Scaff service is more than a courteous follow-up call. It is more than a well worded proposal or a half-hearted promise of delivery. Service is an all encompassing ethos that drives the Company. It is a total commitment to customer service that embraces both product and people.





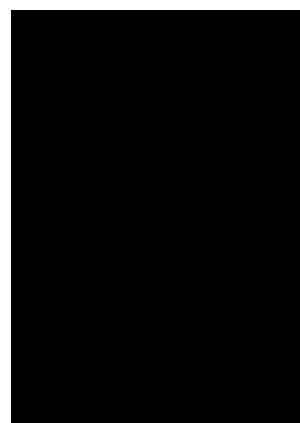
Ownership

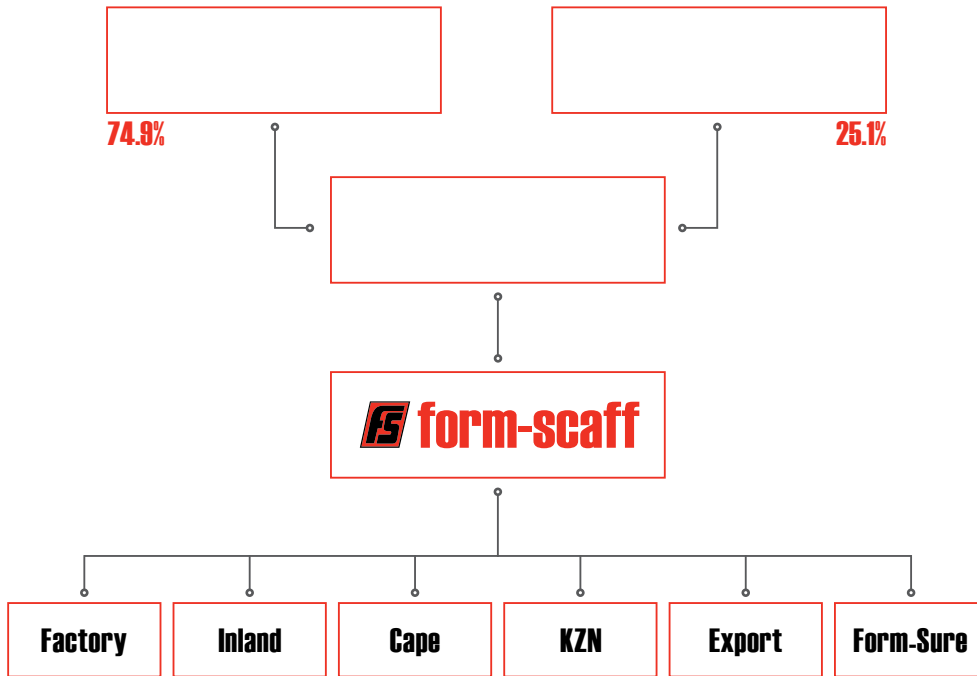
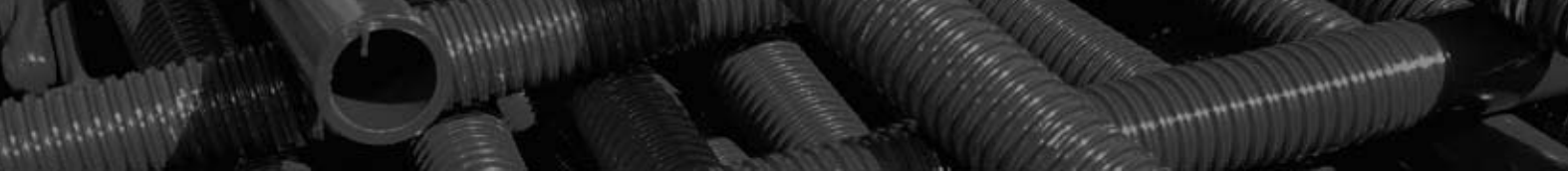
Form-Scaff is a division of Waco Africa (Pty) Ltd and a subsidiary of Johannesburg based Waco International. Waco International is a commercial and industrial hire and service business focusing on scaffolding, forming and shoring. The Company also operates in the re-locatable and modular building arena.

Waco International has operations in Africa, the UK, Australia, New Zealand and Chile, with brand names SGB-Cape, Form-Scaff, Waco UK, Premier Transline, Form-Scaff Chile, Waco Kwikform, Waco APL Kwikform, Ausco and Portacom. The Company offers the following services:

- The manufacture, sale and rental of scaffolding and associated access equipment.
- The provision of specialist formwork systems and solutions.
- Complete supply and erect service through Form-Sure.
- The hire and sale of portable, re-locatable and modular building for a wide range of applications.

Waco International owns 74,9% of Waco Africa. The other 25,1% is held by Kagiso.





Kagiso is the private equity arm of Kagiso Trust Investment and manages Kagiso's private Equity fund and Kagiso Strategic Investments. Recognising the substantial long term growth potential of Waco Africa, Kagiso opted to purchase a significant interest in the organisation.

Formed over twenty years ago Kagiso Trust is one of South Africa's most respected, leading-edge non-governmental development finance organisations. Kagiso seeks to improve the quality of life of the poor and marginalised and regards development as an integral part of transformation and social change.



Making a Difference

Form-Scaff mirrors the commitment of its holding company Waco Africa in the areas of empowerment and social commitment. The group objectives have been formalised in terms of the BEE score card that will deliver 80,8% compliance by December 2006.

Empowered and Committed

As one of the major role players in the South African economy, Waco Africa has a moral responsibility to support the involvement of disadvantaged communities in the main stream of economic activities and to utilise small, medium and micro-sized businesses whenever possible. Waco Africa has equity ownership and is a totally compliant BEE company. Preferential procurement policies are in place to ensure that BEE suppliers are favoured and employment equity as well as skills development are of utmost importance within the group.

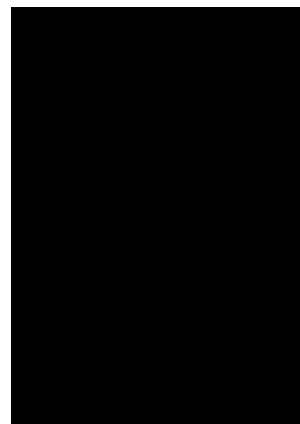
Form-Scaff's commitment to the managerial advancement of historically disadvantaged individuals is entrenched in the Cadet Development Programme. Emphasis is placed on identifying individuals who, through training, mentorship and counselling, can develop into well-rounded managers. The programme supports the Company's succession plans by investing in the development of future leaders.

Waco Africa strives to add value through social investment programmes. These include an AIDS Awareness Programme that is currently underway as well as an Adult Basic Education and Training Programme. Form-Scaff is also actively involved in sponsoring major road races such as the Comrades Marathon.

The company also supports the internationally acclaimed Habitat for Humanity programme, building simple, decent, affordable houses in partnership with those who lack adequate shelter.

“We are committed to the upliftment of our people, communities and our Country.”

Rod Herman, Managing Director

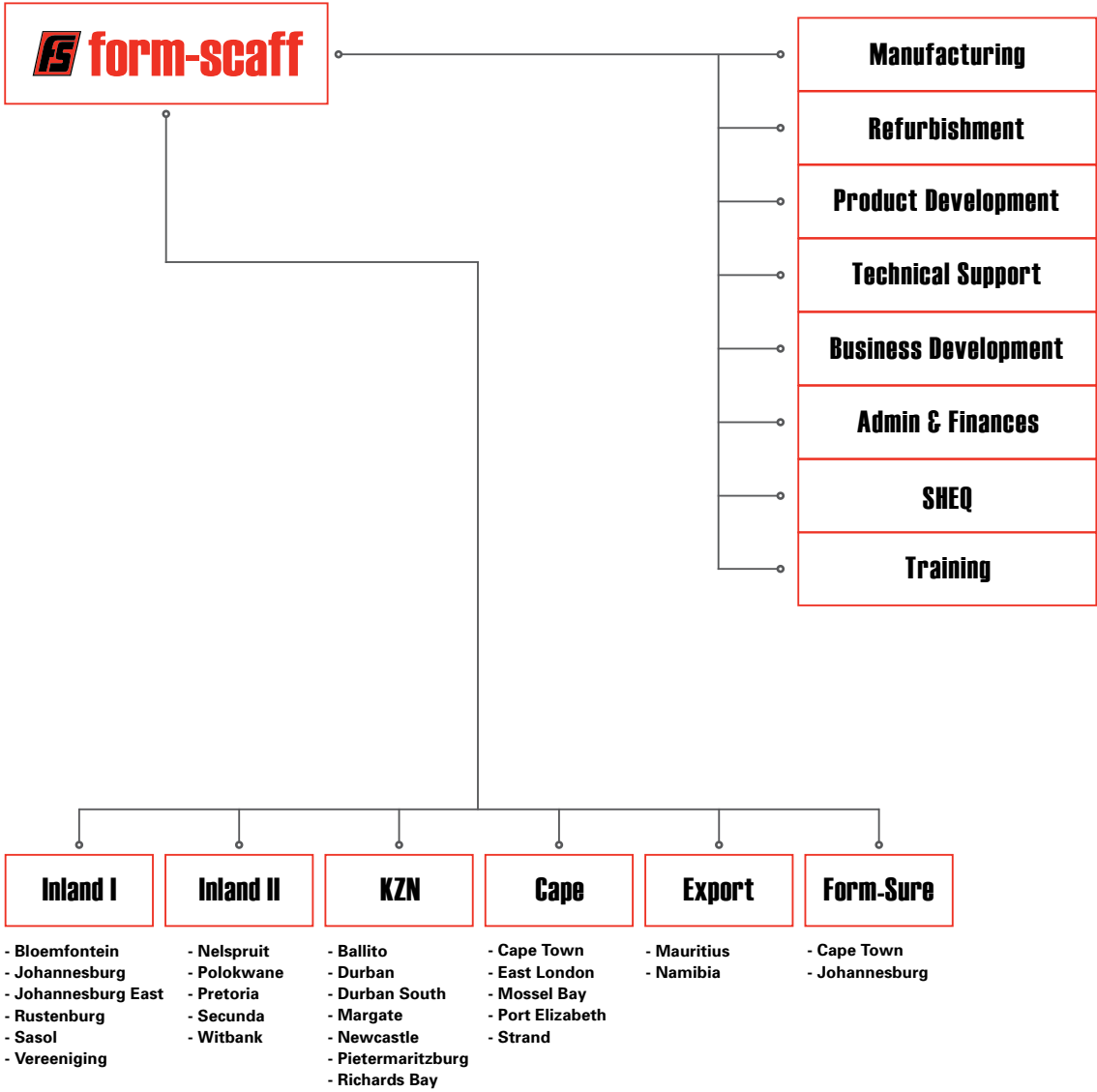


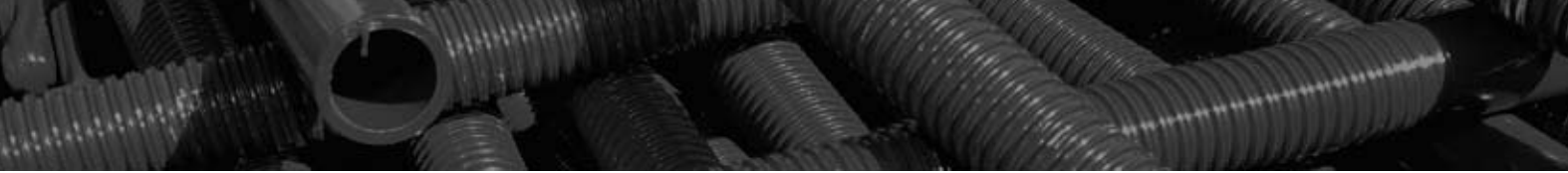
The Divisions and Branches of Form-Scaff

Form-Scaff has been structured to meet the needs of a dynamic, expanding and diversified construction and engineering market. The twenty three Form-Scaff branches have been located in the economic hubs of each province. Form-Sure, Form-Scaff's contracting division, operates from Johannesburg and Cape Town, with the Export Division operating from the Elandsfontein head office. Refurbishment centres are situated in Johannesburg, Durban and Cape Town.

The manufacturing and support services are also located in the Elandsfontein complex.







Manufacturing

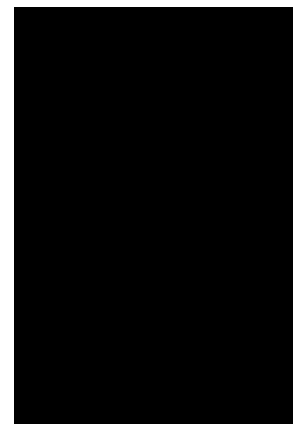
Situated in Elandsfontein, Gauteng, Form-Scaff's 11,000 square metre factory is more than equipped to take up the challenge. Producing over 2000 tonnes of old and new generation products per month, it is the genesis of a process that enables Form-Scaff to meet increasing customer demand by having the right equipment, in the right quantity, at the right place and time.

Special once-off formwork solutions for both the local and international markets are also produced on the factory floor.

Hire and Sales

At every level within Form-Scaff you will encounter experienced, skilled and passionate people. The national and regional technical representatives have a wealth of industry experience and expertise and are able to provide customers with sound advice on both hiring and buying solutions.

Form-Scaff's branch network spans South Africa with twenty three strategically positioned outlets to service the industry. Every outlet maintains a large stockholding to ensure customers' orders are fulfilled promptly. Another advantage of the national network is the ability of one branch to immediately draw stock from an adjacent branch when required.

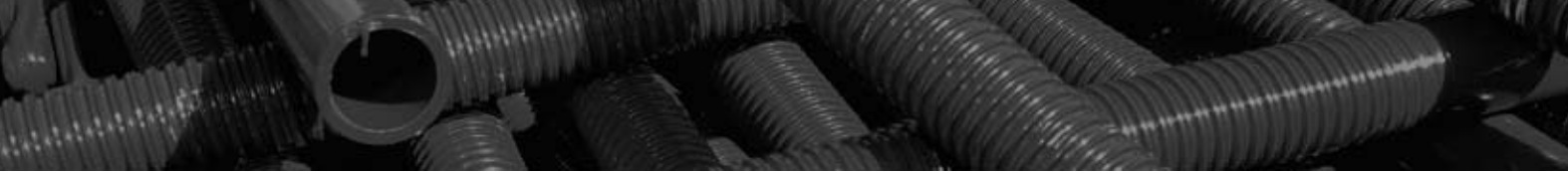




Form-Sure - Comprehensive Outsourcing

A complete supply and erect service is provided by Form-Scaff's contracting arm – Form-Sure. With operations in Johannesburg and Cape Town, Form-Sure meet the challenges of the large construction companies who require a totally out-sourced formwork solution.





Product Development

Form-Scaff has a dedicated development department that is continuously developing new product ranges. With state of the art 3D design software and the only 3D model maker in the industry, concept to part development now takes only a fraction of the time it used to.

Refurbishment

Whilst general equipment maintenance is performed at branch level there are major stock refurbishment centres in Johannesburg, Durban and Cape Town. Refurbishing over 800 tonnes of stock per month, the centres ensure that all stock going out to clients is safe, clean and fit for purpose. Items are shot blasted, reworked, load tested, dipped and coloured before being cleared for reuse against Form-Scaff's high levels of quality assurance.

Technical Support

Form-Scaff have Design Centres in Durban, Pretoria, Cape Town, Johannesburg and the Elandsfontein head office. These centres are staffed with skilled design engineers and draughts persons working with their latest computer aided drawing systems.

As part of our commitment to continuously improve our product ranges and services to our customers, Form-Scaff have launched a new Toll-Free Technical Advice Line. The new Technical Advice Centre will open on the 1st of June 2006 and will be available during normal working hours to all existing and new clients. The centre will offer technical advice on any formwork and scaffolding related items i.e. formwork and falsework design, safety, erection / dismantling and training. Calls will be handled by a call centre consultant taking your message and arranging for a specialist in that specific field to phone you back within a short space of time. Call the centre on 0800 20 50 29 (Toll-free) or (011) 842-4011.





SHEQ – Quality, Health and Safety

Quality and safety is sacrosanct at Form-Scaff and quality control measures permeate every element of the operation. The application of SHEQ protocols ensure that exacting industry quality standards are maintained. This provides customers with the peace of mind of knowing that all equipment supplied by Form-Scaff is safe and 'fit for purpose'. The process is seamless from the procurement of raw material to the time it is delivered into the customer's hands. The Company has a NOSA 5-star rating and is the only formwork and scaffolding company to have received 'ISO 9001:2000 accreditation'. It is also the stated intention of Form-Scaff to embrace the ISO 14001 standard. Ultimately it is envisaged to have a fully integrated system incorporating OHSAS 18001.

Training

Form-Scaff's new "In-Form Centre" - state of the art showroom and training facility - forms the hub of the Company's commitment in ensuring that both staff and customers are informed and trained in all the new formwork and scaffolding systems. Technical design training as well as two CETA accredited scaffolding courses are also offered at this training facility. Form-Scaff has also formed an alliance with the Construction Industry Education and Training Services (CIETS) to further the quality of the workforce in the construction industry.



Many more contractors are finding that it makes good sense to hire more and buy less. This is because equipment utilisation, not ownership, is the key to producing profits. The true cost of owning equipment is usually more than it appears to be. Under-utilisation of assets and holding costs are a persistent drain on a contractor's resources.

Through hiring, a contractor can conduct his business with a lower investment and use his labour force more effectively.

Contractors hire to:

- Meet short term production peaks.
- Supplement their own stock with equipment that is used only occasionally.
- Employ special items for specific, once off requirements.
- Access extra equipment on the job when it's needed.

Form-Scaff is equipped to provide a complete hire service, which includes:

- Planned delivery and pick-up.
- Continual maintenance.
- A network of branch offices close to all projects.
- Design and specialist advice.

The Advantages of Hire

Operational Advantages:

- Availability of equipment in the right quantities when it's needed most.
- There's no waiting on the availability of capital. When a contract award comes through, the most up-to-date equipment is readily available.





- Mitigating of obsolescence. When a better system becomes available, the contractor is free to try it, and compare it with his existing stock.
- Ownership responsibilities (maintenance, repairs, parts inventory, debt storage, interest, taxes and depreciation) are the hire company's problems. This leaves the contractor free to concentrate on his core business.
- Use the right equipment for a particular job. The best system for the next job may not be what was used on the last job. The labour costs can be kept to a minimum by using the equipment best suited to each job.
- The contractor can make more productive use of his resources without the necessity of servicing, warehousing and transporting equipment.
- Hire invoices can be used as a management tool to effect positive control. The invoice gives a complete history of material delivered, material on-hire and material collected. Keeping close tabs on equipment hire costs can provide an important competitive edge.

Financial Advantages:

- Capital investment in equipment is reduced. Hiring doesn't tie up valuable capital that could be more productive elsewhere.
- Hire is treated as an "off-balance sheet" item, neither an asset nor a liability. This keeps your credit lines available for other needs.
- Office accounting and administration expenses are reduced to a minimum without the extensive bookkeeping that is part of equipment ownership.





Tifa

The Tifa system is the latest new generation wall formwork solution.

It is a heavy duty, crane handled system for large areas and the panels are designed to withstand concrete pressures of up to 60kN/m².

Tifa and Tifa-Lite – the preferred formwork solution

The system consists of a steel frame and timber-face to produce high quality finishes. Erecting and dismantling the formwork is quick and easy.

Being quick and easy, Tifa translates into real labour and hire time savings.

System Features

- Rigid hollow-section steel frame.
- High grade hot dip galvanising for durability / long life.
- Standard SA 600mm wide modules (150mm increments).
- Compatible with Econo-Form as well as other European systems.
- Straight and circular applications available.
- Gang forms and lifting applications available.
- Full range of safety features.
- High quality 21mm WISA-Form plywood.



tifa-lite

Tifa-Lite

Tifa-Lite is a lightweight version of the Tifa system. It has become the obvious system of choice for manhandled formwork. With less components than traditional Econo-Form panels, Tifa-Lite will save you time and effort on shutter assembly.

1200 / 1500 / 2700 height modules

System Features

- Rigid hollow-section steel frame.
- High grade hot dip galvanising for durability / long life.
- Standard SA 600mm wide modules (150mm increments).
- Compatible with Econo-Form as well as other European systems.
- Straight and circular applications available.
- Gang forms and lifting applications available.
- Full range of safety features.
- High quality 15mm WISA-Form plywood.
- 60kN/m² permissible fresh concrete pressure.





multi-form



Multi-Form Slabs

Form-Scaff's unique Multi-Form slab range provides contractors with a choice of main and secondary bearers that can be used in a number of ways. Multi-Form bearers are available in steel as well as timber.

Optimising on-site flexibility

Form-Scaff's unique Kwik-Strip Drophead allows the Multi-Form deck to be stripped after a couple of days, thus optimising equipment usage on site. Table-Forms are also available for larger, repetitive projects.

System Features

- Galvanised steel bearers and beams for longevity.
- Timber bearers and Table-Forms available.
- Propping between 1.8m and 6.15m.
- High quality WISA-Form plywood.
- Superb concrete finishes.
- Compatible on Kwik-Stage.



multi-form

Multi-Form Walls

Form-Scaff's unique Multi-Form Beam also doubles up as a soldier in the Multi-Form wall system. With twin channel Walers behind for strength and high quality plywood facing on the front, Multi-Form guarantees a superb shutter finish.

Available in standard panels or loose components

The standard size panels are made up at our premises and delivered to site. Off-shutter columns, walls and lift-shafts are possible with this lightweight walling system.

System Features

- Unique Multi-Form Beam as the soldier.
- The Walers and Splices self-align the panels.
- Splices and Wedges ensure water-tight connections between panels.
- Straight and circular applications are available.
- Climbing and lifting applications are available.
- Offers a superb off-shutter finish.





alu-dalle



Alu-Dalle

Alu-Dalle is Form-Scaff's aluminium decking system that provides a fast erect and strip system for flat concrete slabs. It is proving to be the best system of its kind as it has a rigid interlocking feature which ensures more stability during the erecting process.

Lightweight decking system

The aluminum panel frame holds a 12mm WISA-Form plywood board that ensures a high quality concrete finish. Lightweight aluminum beams and panels translate to reduced erection and dismantling costs.

Available in a 1800 x 1600 grid on Form-Scaff's Alu-Up Props, BS Props and Kwik-Stage.

System Features

- Rigid interlocking feature ensures stability.
- 1800 aluminium beam.
- 1500 x 600 aluminium panels.
- Kwik-Strip Drophead.
- Propping range 1.8m to 6.15m.
- 12mm WISA-Form Plywood.



tim-deck

Tim-Deck

Tim-Deck is a galvanised steel alternative to Alu-Dalle. The range includes the same type of components, ease of use and ultimate labour savings. Being only 10% heavier than Alu-Dalle, Tim-Deck offers better longevity with a reduced risk of theft.

Longevity and reduced theft

Available in the standard 1800 x 1600 grid as well as a 2500 x 1600 grid on Form-Scaff's Alu-Up Props, BS Props and Kwik-Stage.

System Features

- Rigid interlocking feature ensures stability.
- 1800 and 2500 steel beams.
- Kwik-Strip Drophead.
- Propping from 1.8m to 6.15m.
- 12mm WISA-Form plywood.





kwik-stage



Kwik-Stage

Kwik-Stage is a versatile scaffolding and support system that can be used for many applications from access scaffolding to slab support. For over 30 years, Kwik-Stage has proven itself to be the most stable and versatile system on the market. With only four basic components, Kwik-Stage lives up to its name as a system that can be speedily erected and dismantled. With its standard grid and interlocking method, it's one of the safest scaffolding and support systems around.

Stability and Versatility

System Features

- Proven system of choice in South Africa.
- Support work for almost any decking type.
- Ledgers provide access to all levels and ensure an accurate grid.
- Good safety track record.
- Modular configuration - easy to check and approve on site.

Coffers and Troughs

Form-Scaff's extensive range of coffer and troughs provide an economical solution for large spans of concrete flooring.

Using coffer for two way spanning floors delivers savings as there is a significant reduction in the volume of concrete and steel required. Total floor weight is also reduced which means lower support and foundation requirements. Fibreglass coffer are light, easy to handle and store. By using Form-Scaff coffer you are assured of a 'fair faced' finish.

Economic large span floors

Form-Scaff's fibreglass troughs are used in the construction of one way spanning floors and deliver the same economical advantages as coffer.

Features

- Lightweight fibreglass construction.
- 900 x 825 modules.
- 225, 325, 425 and 525 height modules.





econo-form



Econo-Form

Econo-Form is a multi-purpose formwork system that can be used for vertical and horizontal formwork applications. With tie centres at 300mm and punched slot periphery, Econo-Form can be used in a variety of ways.

Multi-purpose formwork solutions

System Features

- Quick to assemble and strip with wedge sets.
- Minimum clamps required.
- Stiffeners have been built into the panels to minimise alignment issues (only two scaffold tube walers required per panel).
- Over 40 different panel sizes available.



kwik-lock

Kwik-Lock

Kwik-Lock frames are the quickest and easiest way of gaining access to elevated positions. When correctly tied back, Kwik-Lock towers can be extended up to 30 metres.

Instant access to elevated positions

Easily assembled by two labourers, Kwik-Lock requires limited tools and the castors make the towers mobile on appropriate surfaces.

Features

- Three standard frame sizes.
- Frame on frame connections ensure fast erection time.
- Castor wheels available for mobile scaffolds.
- Access ladders and trapdoors available.





Sundries

The application of formwork and scaffolding on site may require the use of quality supporting items such as Form-Scaff's recoverable anchor screws through to a heavy duty girder set for larger projects.

A complete range of supporting sundries are available from Form-Scaff including:

- Tie Systems.
- Column Boxes.
- Strut and Trench Sheeting.
- Road Forms.
- Trestles and Planks.
- Pallets and Stillages.
- Maintenance Equipment.
- Tools.
- Heavy Duty Girder Systems.
- Concrete Buckets.
- Special Once-off Formwork.



Technical Advice Centre 0800 20 50 29 / (011) 842-4011

WACO AFRICA / HEAD OFFICE: PO Box 669, Isando, 1600. 181 Barbara Road, Elandsfontein. Tel (011) 842-4000, Fax (011) 842-4280

www.formscaff.com